

Port Everglades Terminal 18



Project Type: Cruise Terminal

Location: Fort Lauderdale, FL

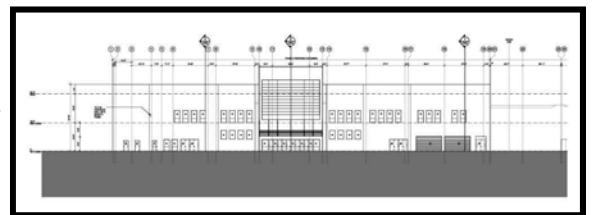
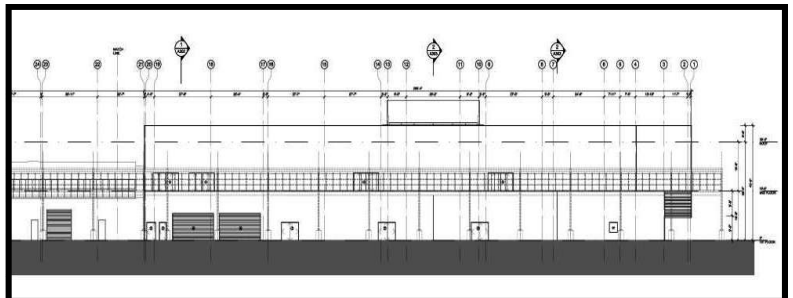
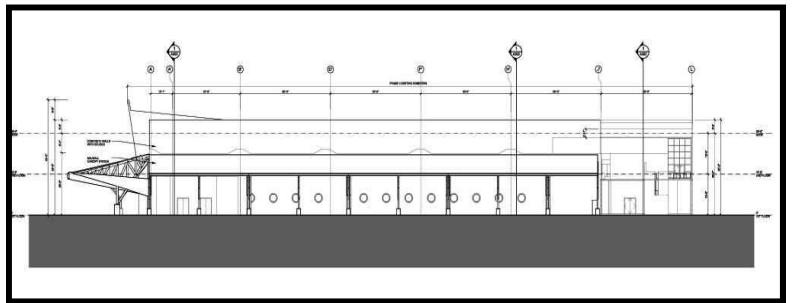
General Contractor: Hewett-Kier Construction, Inc.

Architect: Bermello Ajamil & Partners

Engineer: Lakdas/Yohalem Engineering Inc.

Square Feet: 174,681

General Description: Terminal 18 is a dual purpose facility handling both cargo and cruise operations. This new terminal will accommodate Oasis of the Seas, the world's largest and most revolutionary cruise ship in the world. When completed, the terminal will consist of covered passenger drop-off, passenger seating, two sets of restrooms, mezzanine, two elevators, two escalators, duty-free concession, snack bar, baggage handling, two hydraulically-powered, covered passenger loading bridges, fully air-conditioned, handicapped access.



1003 Orienta Avenue. Altamonte Springs, Florida 32701. 407.834.8458 Voice. 407.834.6881 Fax.
www.tilt-con.com